

Stunning two bedroom penthouse close to Puerto Banús

ID-826 - For Sale

From:
254,520€

Marbella › Nueva Andalucía › Puerto Banús



Contemporary style two bedroom penthouse in Nueva Andalucía. Situated close to Puerto Banús and the beach and just a short drive to all amenities, it is a great location to make the most of the local surroundings and facilities while also enjoy a relaxing break. Just a few minutes to the motorway with easy access to Marbella and Estepona . The complex itself offers two lovely communal swimming pools, one with salt chlorination effect, tennis paddle court, basketball court, and playground.

Beds	2
Baths	1
Plot Size	195 m ²
Living Area	75 m ²
Terrace	115 m ²
Parking	yes
Heating	air-conditioning hot and cold
Built in	2000

With a modern style, the property exudes a fresh and welcoming ambience and boasts a fantastic terrace with stunning views towards the Mediterranean Sea.

Layout:

Small entrance with a bathroom leading through to an open-plan kitchen and then down to the living and dining area which offers dining space for up to four people and a cosy sofa area with direct access out to the terrace. The large, L-shaped terrace (115 sqm.) provides a lovely al-fresco dining area, a chill-out space, two sunbeds and fabulous views. Back inside, off to the left of the kitchen you will find the master bedroom with en-suite bathroom and terrace access and the second bedroom with twin beds. There is also direct access to the terrace from this room.

This is a very attractive, modern penthouse in a convenient location; perfect for families, couples and young or elder persons.

IBI: 550,00€

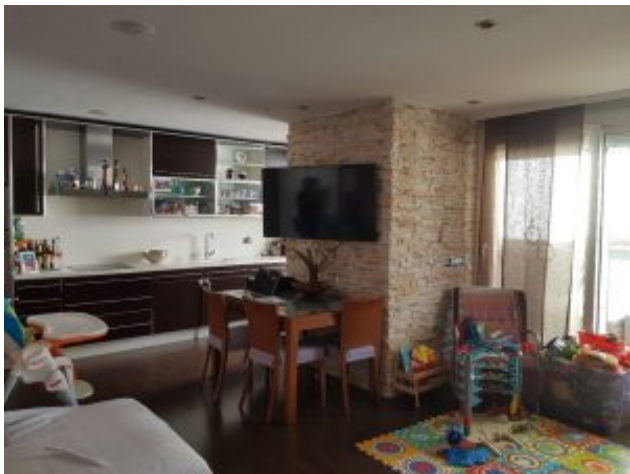
Community fee: 121€

Additional Features

Image Gallery

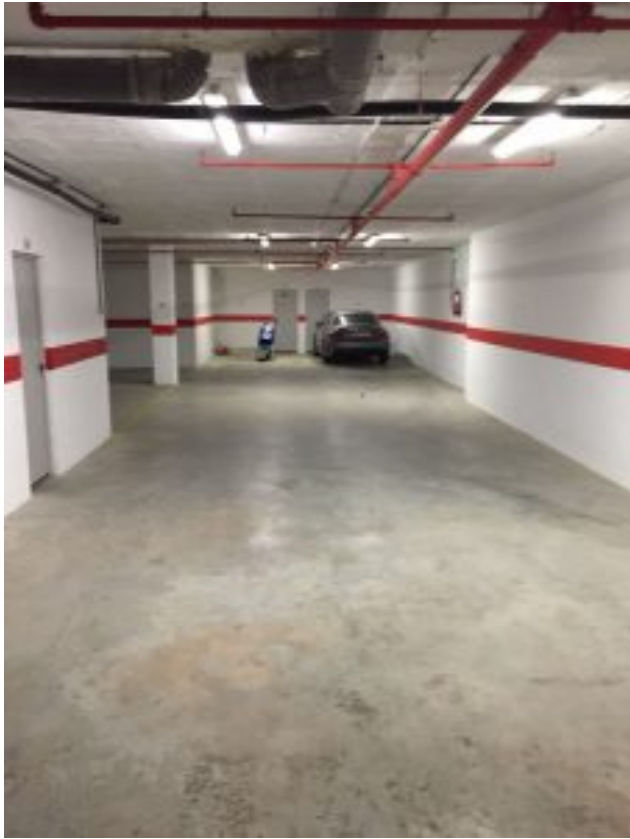












Property Location

